

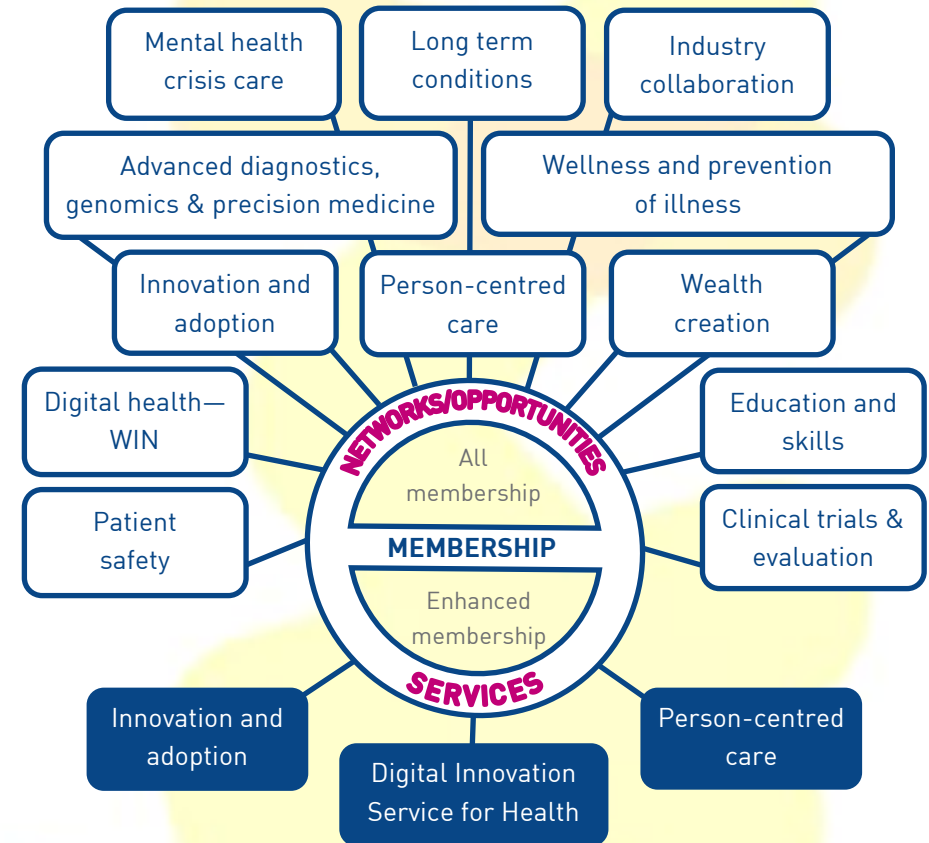
## OUR ENHANCED MEMBERSHIP

The West Midlands Academic Health Science Network (WMAHSN) launched its enhanced membership scheme on 1 January 2016

### Our membership benefits

 Access to all services and expert networks	 Premium access to Meridian, the online healthcare innovation exchange, and Meridian training   Range of readymade innovation resources and tools available	 Enter the Celebration of Innovation awards
 Practical advice and support available via phone, email or a visit from one of our experts   Enhanced starter pack, including contacts, guides and other useful information	 Enhanced communications package, including reduced sponsorship, exhibition and advertising rates, joint PR opportunities and enhanced membership logo	
 Attend WMAHSN events	 Access to the medicines optimisation component	

### Our networks and services



For more information, including fees, contact Farana Akhtar, Membership Co-ordinator, on 0121 371 8061 or email [farana.akhtar@wmahsn.org](mailto:farana.akhtar@wmahsn.org)

**MidTECH** Membership of MIDTech, the West Midlands' NHS Innovation Hub, worth £5k per year